



CHEVRON

The Newsletter of the Bead Society of Orange County



Korean Kumboo gold fusing technique

Eileen Gerstein



THE ANCIENT ART OF FUSING GOLD

Date: Saturday, Oct 22nd, 2011
Location: The Bowers Museum. Norma Kershaw Auditorium
2002 N Main Street, Santa Ana CA
Hosted by the Bead Society of Orange County
Non-Members \$5. admission

Member Mixer with refreshments: 10 AM
Program 10:30 AM-12:30 PM

President's Letter

When our BSOC past president, **Cheryl Richards**, signed off on her messages, she always wished us "Happy Beading." What a great way to remind us of our mission; and as your new president I will find a phrase that "fits" in that same tradition. Cheryl has tiny feet, but HUGE shoes to fill!



Where has the summer gone?

Well, it's not over yet! Coming up is our "Annual Membership Summer Sale" at The Bowers Museum on Sept 24 10am to 12noon. This is a fun time to sell to other members whatever you have in your inventory, or whatever moves you. It must all fit on a card table or something no bigger. Make this the year that you *participate* in this super event.

"Now Go Make Something Great. . ."

. . . is our Annual Bead Challenge - **Kat Clark, our Treasurer** has the bead packets . . . contact her and participate. Winners will be announced at our **Oct 22nd Meeting** with great prizes.

October 22 Meeting

Melinda, our Program Chair, has arranged another wonderful program featuring **Eileen Gerstein** sharing her knowledge and talent on the Korean method of fusing gold, known as "Kumboo." Also, please remember to sign up for our workshop: "**Boxes, Bangles & Beads.**" which follows our meeting; presented by our Own 2nd VP, **Maria Bastanchury**. The October meeting is your next opportunity to bring a guest - think about it - our entire membership started as a guest to a meeting. What a great way to *participate* and share our good fortune.

We're Dark in November . . .

. . . but all lit up in December. Look for your December party postcard reminder.

At our August meeting I encouraged you to Volunteer!, your response was extremely gratifying; thank you and keep it up. Perhaps you've noticed I'm asking you now to add another word to your Bead Society vocabulary: *participate*.

Let's all pledge to make this the best year ever, and . . . *the bead goes on,*

Shirley

Increase your knowledge, skills and friendships at a Bead Society of Orange County Workshop

October Workshop



BOXES, BANGLES & BEADS

Following a brief introduction to decorative Japanese washi paper, you will learn how to create one-of-a-kind jewelry using washi to cover wooden beads or bangles. Or you may choose to cover a small box. Time permitting, **Maria Bastanchury** will also show you how to use washi to make holiday ornaments, to embellish greeting cards, and scrapbook pages and more. Your materials fee of \$8 covers everything you need to complete one project; a bangle, a set of beads, or a small box. Workshop is limited to 12 participants. If the workshop is full, we will put your name on a waiting list for a future date.

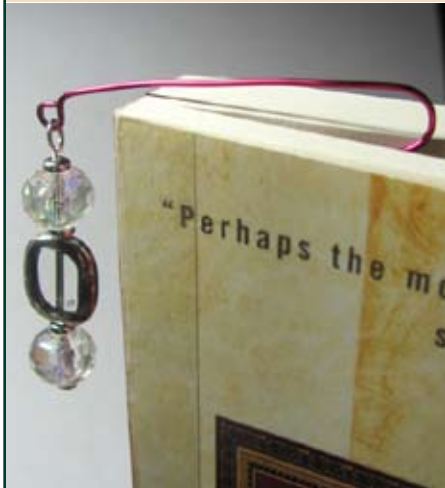


How It's Done - *Beaded Wire Bookmark by Mary Carter*

Supplies & Materials

- 20 gauge craft wire
- Head Pin
- Assorted beads & embellishments
- Round Nose pliers
- Wire cutters

This project uses basic tools and simple materials to get beautiful, professional results. The bookmark also makes a lovely holiday gift!



1 Cut your length of wire

Cut 25" to 28" of wire (a few inches longer for round design).

2 Make your wire design

With your round nose pliers, start the design (square, round, triangle, etc) at one end of the wire and continue until the design is the size you want, making sure to leave at least 8 to 10 inches for the center design (see step 2) and top.

A



B



Bend wire in a back and forth pattern (pointed, round, squared off or wavy, etc.), leaving enough straight wire at the top to extend beyond the binding of a book and include another half inch for the loop that suspends the beadwork.

3 Finish Off your wire

Bend the end of the wire up and around to form a loop, then bend the loop down so it's at an angle to the flat top of the wire. Set aside



4 Make the Fob Dangle Element



A

Create the beaded design on the head pin, leaving at least 1/2" to make the simple loop that will connect to the bookmark

B



Bend the top of the head pin so that it's forming a loop but don't close the loop yet. Insert the open end of the head pin loop through the front of the wire loop of the bookmark, so that the loop will connect in the back of the design. Close the head pin loop so that the beads are dangling from the bookmark.

5 Enjoy Your Handiwork!

These make great gifts, especially when accompanied by gift cards to Amazon or Barnes and Noble!

TIPS:

The design at the bottom doesn't have to match the design in the center--if you've made a round bottom, don't feel obligated to round the corners of the center design. It's ok to vary the patterns.

The bead designs can either contrast or blend with the wire color.

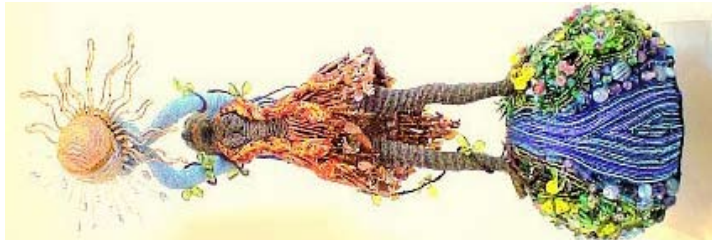
Use an eye pin instead of a headpin and attach a charm or more beads or a little ribbon, etc., to the bottom of the beaded design.



JANUARY 2012 SPEAKER**Carol Webb**

My process involves the lamination of a thin layer of copper over a thicker layer of fine silver. I then photo-etch through the copper to the silver to obtain patterns.

I spent time in China and Japan where the language of pattern, and it's potential, made it's strongest impression. I began to ask myself "What makes pattern; how can I use it's language?". Then I had questions about the language and its symbolism. Questions like "What makes checkerboard so universal?" "What is so appealing about triangles?" I find answers in fragments, giving direction to the next step, or series of steps.

**CALL FOR ENTRIES****ALL DOLLED UP: Beaded Art Doll Competition**

Deadline: Sat, 8/31/2013

Description: Create a Beaded Art Doll representing the theme: Transformations and write a short story about your entry. 1st prize \$1000 shopping spree on landofodds.com, 2nd prize \$400 shopping spree on landofodds.com

To enter: landofodds.com/store/alldolledup.htm

Crafts National 2012

Deadline: January 6, 2012

Description: Mulvane Art Museum, Topeka, KS juried exhibition of clay, fiber, glass, metal, wood, beads, basketry, handmade paper & mixed media.

To Enter: callforentry.org

**International Society of Glass Bead Makers**

Deadline: Nov 30, 2011

Description: Membership in the International Society of Glass Bead makers is a requirement for entering this show.

To Enter: isgb.org/isgb-exhibitions/151-venturecallforentries.html

**Revere Academy Bead Scholarship**

Deadline: October 15, 2011

Description: a new scholarship aimed at the beading community. It is a complete scholarship for any of its 3-day classes. Open to anyone who makes beaded jewelry and would like to learn more about traditional jewelry making.

To Enter: revereacademy.com/guide/scholarship/

Bead Society of Orange County

HOLIDAY PARTY

Saturday - December 10, 2011
10 AM -12 Noon

At the Bowers Historic Balcony and Fluor Gallery

Enjoy great food! BSOC Hospitality will be pulling out all of the stops for this wonderful party. Come and enjoy the Christmas season with your fellow beaders.

◆ Annual Holiday Mystery Bead Swap

Bring a special bead in a plain brown bag. Each member will draw a number for their turn to choose from the packages. It's lots of fun and some real treasures have been received throughout the years!

◆ Holiday How-To Demonstrations:

Melinda Alexander will be giving a special demonstration guaranteed to add something great to your jewelry skills

Corliss Rose Special Effects Polymer Clay



Corliss Rose, of 2Roses, will present "polymer clay beads - extraordinary effects from simple techniques".

LEARN HOW TO:

- make faux wood
- make variations on the bulls eye cane

Corliss will also provide handouts so you can try it at home.

Kat Clark Fold Forming Basics



Kat Clark will present the basics of fold forming metal. Fold forming can be used to make metal beads, clasps and other items that make a finished piece of jewelry something special.

Kat will show you how to "make it like a pro.!"

Featured Member

Shirley Price

I was born in Saskatchewan, Canada, and moved to California in 1962.

Owning a travel agency gave me the opportunity to travel the world and I did, buying and collecting beads, though at that time, I knew not why. They all came to rest in a metal foot locker



I now work mainly with fine & sterling silver fabricating pendants, collars, necklaces and earrings with cabochons and beads that I find from all over the

world. I sell mostly wholesale to over 130 galleries across the USA and into Canada. I do two huge wholesale shows per year, one in January in Orlando and the other is June in Las Veags. All this keeps me motivated and in my studio 5 days a week from 7:30a to 3:30p

My current collection, "The Emperor's Treasure and Twigs of Fortune," reflect the cool elegance and soothing balance of the Asian culture with symmetry of line & color, expressing the visual and emotional relationship between the silver and stones. My collections are the melding of contemporary with the best of heritage, commanding when viewed, dramatic when worn.



in my garage, forgotten for about 6 years, until my love for soldering and metals began with the Irvine Fine Arts Center and dear Vesta Ward as a teacher and mentor. Since, I've taken 8 classes at the Revere School in San Francisco and various college classes in and around our area. What started out as a hobby has become my second career!

I joined the Bead Society to learn more about what I'd collected, to meet fellow bead lovers, and to gather wonderful bits of information on anything connected to this love for beads!



The Bead Society of Orange County

Board of Directors

Officers:

President

Shirley Price
spltdeditions@aol.com

VP Programs

Melinda Alexander
metalsmithmelinda@yahoo.com

2nd VPs Art of Adorning

Maria Bastanchury
mbastanchury@yahoo.com

Jill Gard
jilmарcel@sbcglobal.net

3rd VP

Arlene Woods
akw153@att.net

Secretary

Pam Werner
pjwerner@aol.com

Treasurer

Kat Clark
kat@katdesignsusa.com

Committees:

Hospitality

Holly Hillman & volunteers
hhillman@fullerton.edu

Workshops

Sandy Hefnider
shefnider2010@hotmail.com

Membership

Arlene Woods
akw153@att.net

Website

Corliss Rose
webmaster@beadsocietyoc.org

Newsletter

Corliss Rose
editor@beadsocietyoc.org

**Kudos to
BSOC member
Annette Hernandez**

Five of her students won 6 ribbons this year at the O.C. Fair!!

Annette also Won First place in 2011 First Place --Division Winner --and Best of Show! Professional Beading--Jewelry Body of Work 9 pieces



Be Colorful

with simply the best craft wire by Soft Flex® Company.



NEW Soft Flex® Craft Wire

18-28 gauge

Permanently colored copper wire

Resistant to scratching, peeling and marring

Can be tempered to half hard

100% lead and nickel free

Made in the USA



Blue Curacao Necklace

Design by Jamie Hogsett

Free Project Ideas

are available at

www.SoftFlexCompany.com

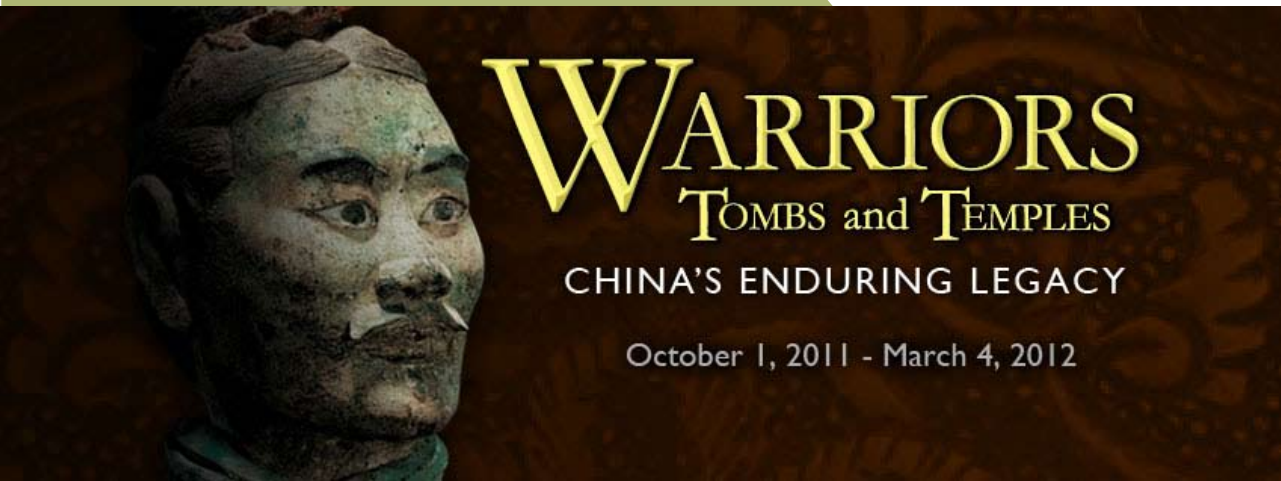


www.SoftFlexCompany.com

Toll Free Phone (866) 925-FLEX (3539) • U.S. Phone (707) 938-3539



Soft Flex® Glass Art & Bead Festivals ~ Honolulu, Hawaii: March 2-4, 2012 & September 21-23, 2012



WARRIORS

TOMBS and TEMPLES

CHINA'S ENDURING LEGACY

October 1, 2011 - March 4, 2012

The royal and elite tombs from the Tang Dynasty were stocked with riches clearly tied to the trade of exotic goods along the Silk Road. Dazzling gold ornaments, tomb guardians,

The treasures that accompanied China's rulers and elites in the afterlife, and the spectacular gold and silver offerings placed in their temples, speak to the incredible accomplishments of an ancient culture whose descendants still live on today.

The exhibition features the famous life-size terra cotta warriors, protector of China's first emperor Qin Shihuangdi, whose mausoleum complex is considered the eighth wonder of the world.

a mural depicting a game of polo and many other luxuries illustrate the taste of Tang elites and the era's connection with the West. And, for the first time in the United States, come gold, silver and gemstone treasures deposited into the treasure-crypt of the Famen Monastery by six Tang Dynasty emperors and China's only female emperor Wu Zhao. This important Buddhist site, sealed in 874 of the Tang Dynasty and rediscovered in 1987, was founded with the fragment of the historical Buddha's finger bone. The reliquaries associated with the sacred relic are part of this exhibition.

CHEVRON

Newsletter of the Bead Society of Orange County

Coming Events

January 28, 2012

Carol Webb

Metal Etching

February 25, 2012

Cynthia Moorehouse

The use of color in beading

March 24, 2012

John Jensen

Techniques in Damascus steel, knifemaking and collectable weaponry